

Model No.WST06 MITER SAW STAND

Support technique Makita le 28/11/2022 :

Suite à une modification du chariot (DEAWST06 et DEBWST06) merci de prendre en considération les modifications suivantes avant d'accéder à la vue originale avant modification.

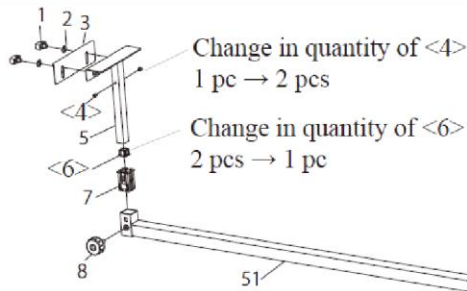
Cette procédure a pour but d'éviter les confusions sur les pièces présentes sur chaque chariot, et d'identifier correctement les bonnes pièces.

Ancien système (poignée)



Nouveau système





Change in quantity of <4>
1 pc → 2 pcs

Change in quantity of <6>
2 pcs → 1 pc

Elimination of <54>

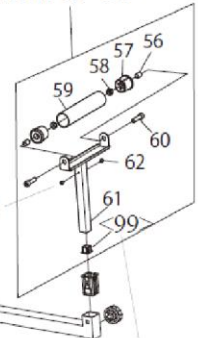
Change of <55> JM23600014 CROSS HEAD SCREW M4
→ JM00000221 CROSS HEAD SCREW M4X10

Allocation of JM00000256
ROLLER SET as <98>

Change of <44>
JM23600017 SELF-TAPPING SCREW ST4.2
→ JM00000225 SELF-TAPPING SCREW
ST3.5X13

Elimination of <54>

Change in quantity of
<62> 1 pc → 2 pcs

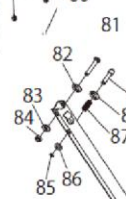
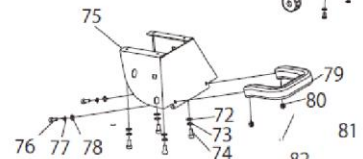
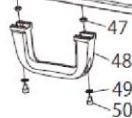
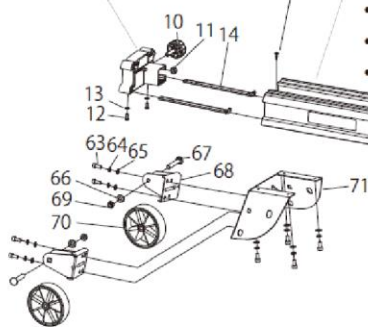


Change in part number of <9>
JM23600015 → JM00000224

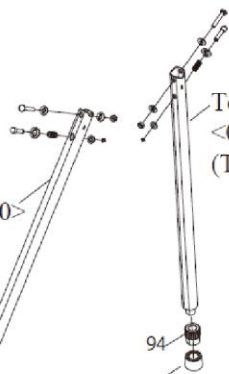
Change of the following components of <45>
(Item No. 45) Main frame complete:

- Elimination of 045 C10 Main frame JM23600032
- Change of 045 C20 Makita logo label JM23680002 → Logo label JM00000193
- Change of 045 C30 Caution label JM23680004 → JM00000196

Allocation of JM23600004
COVER as <99>



Change in part number of <90>
JM23610003 → JM00000235
Termination of supply of
<090 C10/ 090 C20/
090 C30/ 090 C40>



Change of <95>
JM23600048 LEG CAP B
→ JM00000238 LEG FEET, A

Change of <96>
JM23600047 LEG CAP A
→ JM00000234 LEG FEET, B

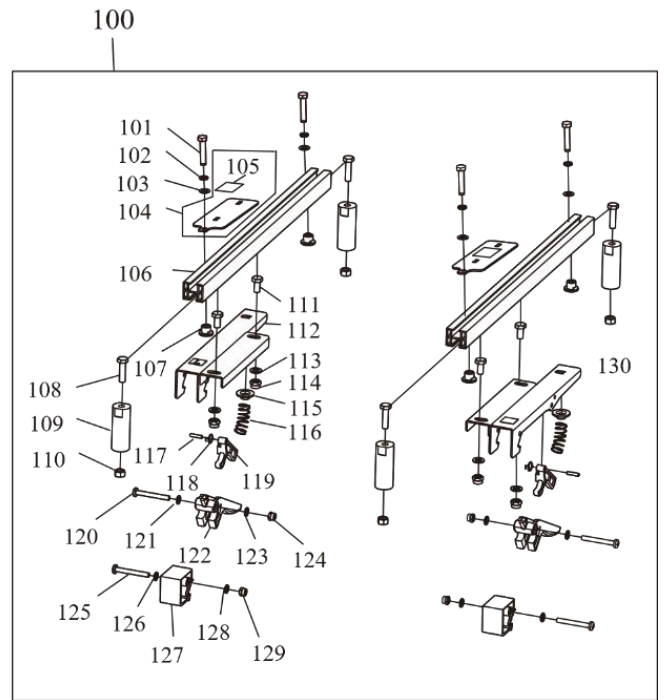
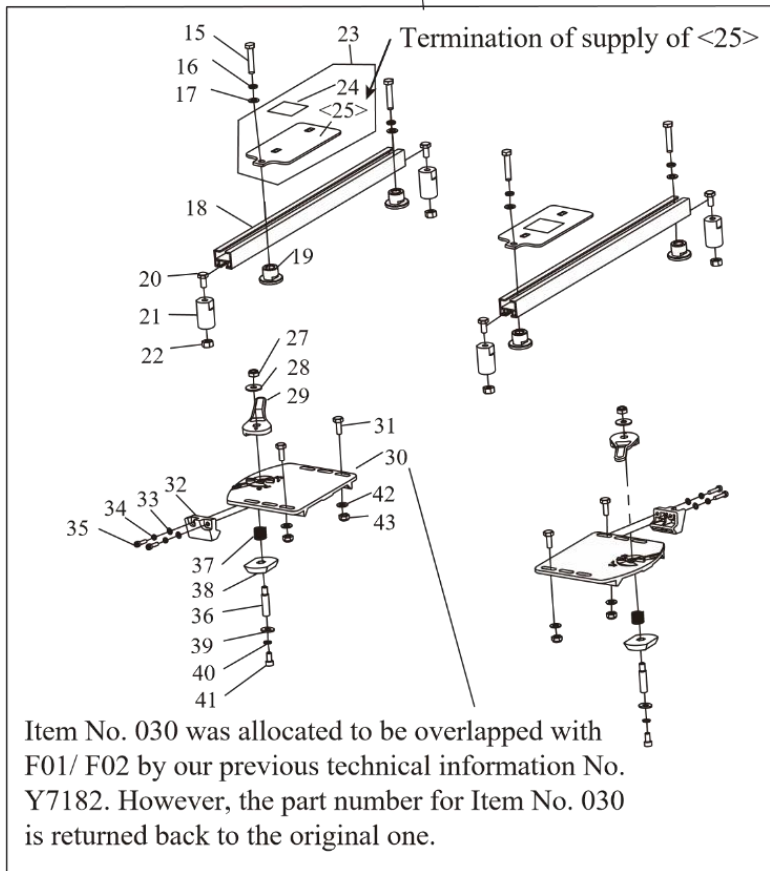
Change in part number of <92>
JM23610004 → JM00000235
Termination of supply of
<092 C10/ 092 C20/ 092 C30>



Change in part number of <93>
JM23610003 → JM00000235
Termination of supply of
<093 C10/ 093 C20/
093 C30/ 093 C40>

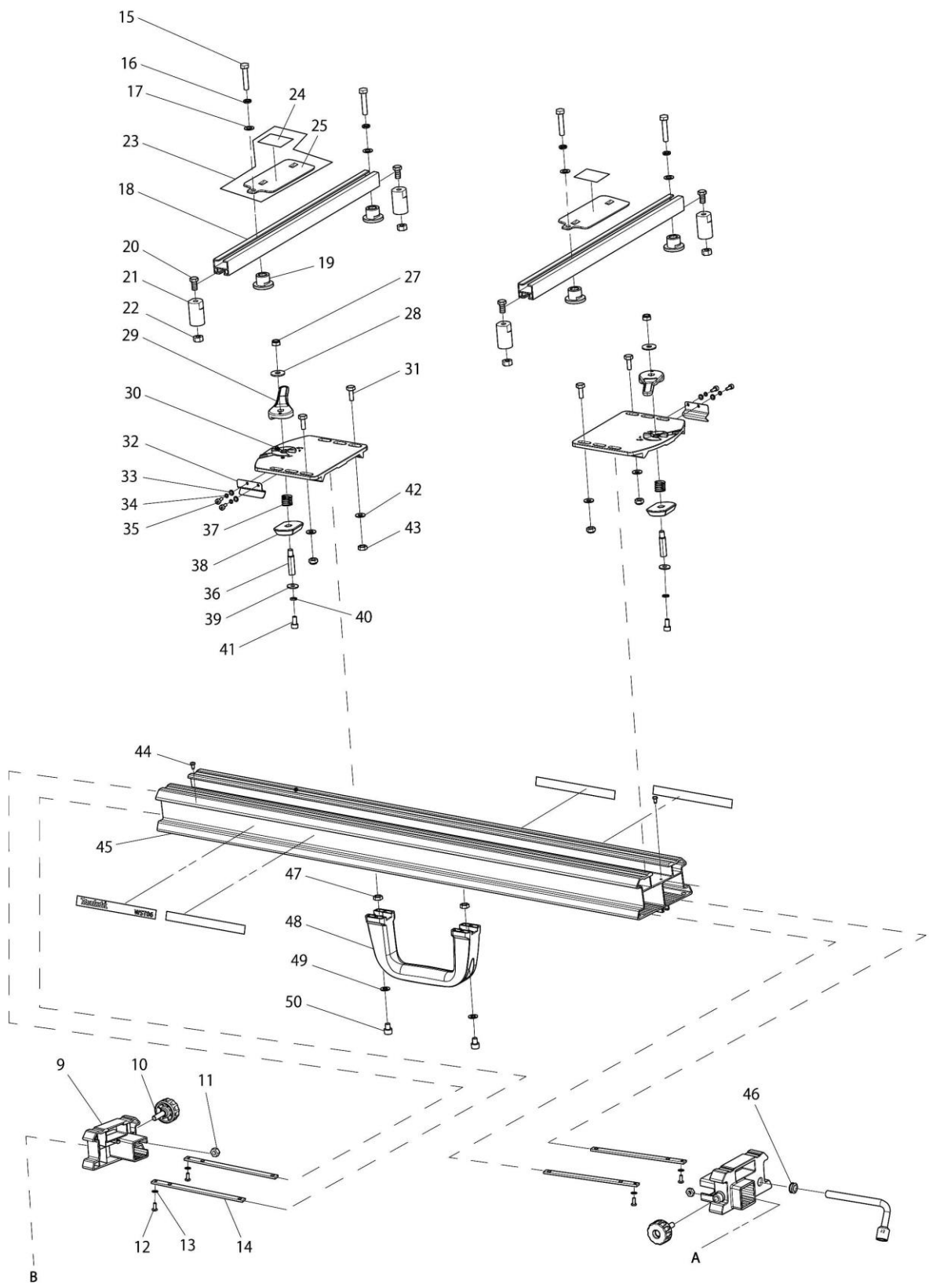
<030>→<097>

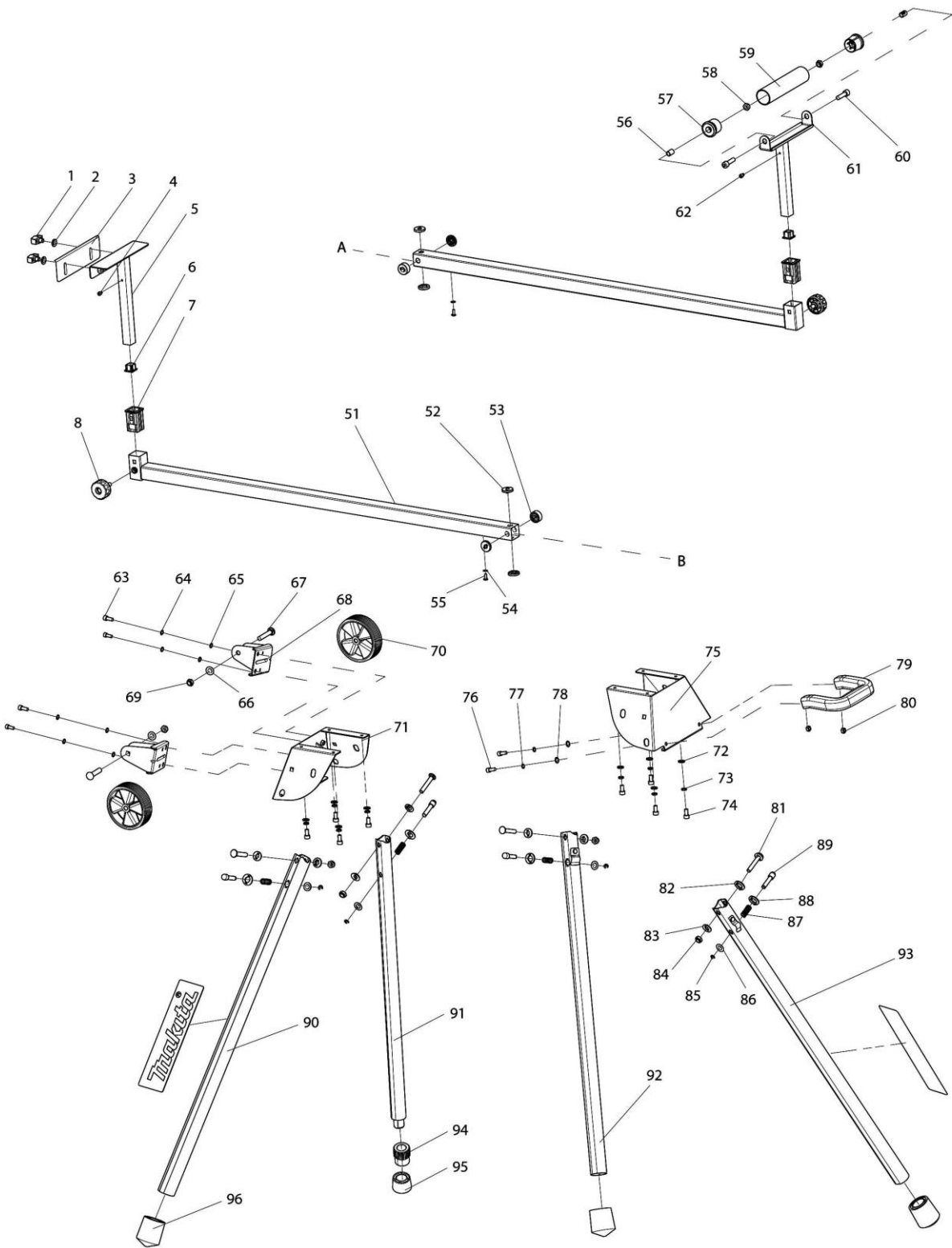
Item No. 097 is changed to Item No. 100.



Pour toutes questions, merci de bien vouloir contacter le support technique : technique@makita.fr

Fin de notification





Model No.WST06 MITER SAW STAND

Position	Référence pièce	Description	Echange	QTE	New/Old	Option 1	Option 2	COMMENTAIRE
001	JM23400040	BOUTON		2	*	65	P2	
001-1	JM23400040	BOUTON	O	2		65	P2	
002	JM21000060	RONDELLE 8		2		0	P1	
003	JM23600001	PLAQUE		1			P3	
004	JM23600002	VIS M4x6		1	*		P1	
004-1	JM23600002	VIS M4x6	O	2			P1	
005	JM23600003	SUPPORT		1			P8	
006	JM23600004	COUVERCLE		2	*		P1	
006-1	JM23600004	COUVERCLE	O	1			P1	
007	JM23600005	BAGUE		2			P67	
008	JM23600006	BOUTON DE BLOCAGE A		2			P67	
009	JM23600015	COUVERCLE DE RAIL		2	*		P1	
009-1	JM00000224	RAIL COVER	X	2				
010	JM23600016	FERMETURE VIS PAILLON CENTRALE B		2			P67	
011	JM23600012	ECROU M8		2			P1	
012	JM23600014	VIS M4 10		4			P1	
013	JM21000026	RONDELLE 4		4		0	P1	
014	JM23600013	SUPPORT DE FIXATION		4			P1	
015	JM23600059	VIS M8x65		4	*		P1	
016	JM21000059	RONDELLE 8		4	*	0	P1	
017	JM21000060	RONDELLE 8		4	*	0	P1	
018	JM23600029	RAIL MOBILE		2	*		P64	
019	JM23600028	ECROU M8		4	*		P1	
020	JM23600027	VIS M8x16		4	*		P1	
021	JM23600026	PIED		4	*		P67	
022	JM21000058	ECROU M8		4	*	0	P1	
023	JM2361A006	PLAQUE DE SEPARATION		2	*		P8	
D10		INC.24,25			*			
024	JM23680006	INDICATION		2	*		P1	
025	JM23600062	PLAQUE DE SEPARATION		2	*		P5	
027	JM21000106	ECROU FREIN M8		2	*	0	P1	
028	JM23600030	RONDELLE PLATE 8		2	*		P1	
029	JM23600025	POIGNEE DE BLOCAGE		2	*		P8	
030	JM23610001	SUPPORT DE FERMETURE		2	*		P64	
C10	JM23600023	CROCHET DE VEROUILLAGE		2	*		P17	
C20	JM23600024	PLAQUE DE COUSSINET		8	*		P1	
030-1	JM23610050	SET DE FIXATION	<	1	*		A38	
C10	JM23600023	CROCHET DE VEROUILLAGE		2	*		P17	
C20	JM23600024	PLAQUE DE COUSSINET		8	*		P1	
D10		INC. 15-22,27-29,31-43			*			
030-2	JM23610001	SUPPORT DE FERMETURE	X	2			P64	
031	JM23600031	VIS M8x25		4	*		P1	
032	JM23600060	PLAQUE A RESSORT		2	*		P1	
032-1	JM23600064	HOOK	S	2	*			
033	JM21000026	RONDELLE 4		4	*	0	P1	
034	JM21000027	RONDELLE 4		4	*	0	P1	
035	JM23600061	VIS M4x10		4	*		P1	
035-1	JM23600065	H.S.BOLT M4X20	S	4	*			
036	JM23600022	VIS M8		2	*		P1	

Model No.WST06 MITER SAW STAND

Position	Référence pièce	Description	Echange	QTE	New/Old	Option 1	Option 2	COMMENTAIRE
037	JM23600021	RESSORT		2	*		P1	
038	JM23600020	PLAQUE BLOQUANTE		2	*		P5	
039	JM23600019	RONDELLE PLATE 6		2	*		P1	
040	JM21000034	RONDELLE 6		2	*	0	P1	
041	JM23600018	VIS M6x12		2	*		P1	
042	JM21000060	RONDELLE 8		4	*	0	P1	
043	JM21000106	ECROU FREIN M8		4	*	0	P1	
044	JM23600017	VIS DE FORAGE ST4,2x9,5		2	*		P1	
044-1	JM00000225	SELF-TAPPING SCREW ST3.5X13	X	2				
045	JM23610002	CARCASSE CPL		1		0	P73	
C10	JM23600032	BATI		1	*		P73	
C20	JM23680002	MAKITA LOGO LABEL		2	*			
C21	JM00000193	LOGO LABEL	X	2				
C30	JM23680004	CAUTION LABEL		2	*			
C31	JM00000196	CAUTION LABEL	X	2				
046	JM23600033	TUYAU		1			P1	
047	JM23600012	ECROU M8		2			P1	
048	JM23600011	POIGNEE		1			P5	
049	JM21000060	RONDELLE 8		2		0	P1	
050	JM23600010	VIS M8x12		2			P1	
051	JM23600007	TUBE		2			P21	
052	JM23600008	GARNITURE A		6			P1	
053	JM23600009	GARNITURE B		2			P1	
054	JM21000026	RONDELLE 4		2	*	0	P1	
055	JM23600014	VIS M4 10		2	*		P1	
055-1	JM00000221	CROSS HEAD SCREW M4X10	X	2				
056	JM23400038	ENTRETOISE		2		0	P1	
057	JM23400035	COUVERCLE ROULEAU		2		0	P1	
058	JM21000106	ECROU FREIN M8		2		0	P1	
059	JM23400036	ROULEAU		1		9	P12	
060	JM23600034	VIS M8x30		2			P1	
061	JM23600035	SUPPORT DE ROULETTE		1			P5	
062	JM23600002	VIS M4x6		1	*		P1	
062-1	JM23600002	VIS M4x6	O	2			P1	
063	JM23600053	VIS M6x16		4			P1	
064	JM21000034	RONDELLE 6		4		0	P1	
065	JM21000035	RONDELLE 6		4		0	P1	
066	JM21000060	RONDELLE 8		2		0	P1	
067	JM23600056	VIS M8x45		2			P1	
068	JM23600055	LOGEMENT DE CHASSIS		2			P5	
069	JM21000106	ECROU FREIN M8		2		0	P1	
070	JM23600057	ROUE		2			P6	
071	JM23600054	SUPPORT PRINCIPAL A		1			P15	
072	JM21000035	RONDELLE 6		8		0	P1	
073	JM21000034	RONDELLE 6		8		0	P1	
074	JM23600053	VIS M6x16		8			P1	
075	JM23600052	SUPPORT PRINCIPAL B		1			P15	
076	JM23600053	VIS M6x16		2			P1	
077	JM21000034	RONDELLE 6		2		0	P1	

Model No.WST06 MITER SAW STAND

Position	Référence pièce	Description	Echange	QTE	New/Old	Option 1	Option 2	COMMENTAIRE
078	JM21000035	RONDELLE 6		2		0	P1	
079	JM23600036	BRAS DE POMPE		1			P5	
080	JM21000063	ECROU M6		2		0	P1	
081	JM23600037	VIS M8x50		4			P1	
082	JM23600041	COUSSINET 8		4			P1	
083	JM23600041	COUSSINET 8		4			P1	
084	JM21000106	ECROU FREIN M8		4		0	P1	
085	JM23600042	BAGUE 6		4			P1	
086	JM21000060	RONDELLE 8		4		0	P1	
087	JM23600040	POSITION SPRING		4			P1	
088	JM23600039	COUSSINET 13		4			P1	
089	JM23600038	CENTREUR		4			P1	
090	JM23610003	JAMBE COMPLETE A		1	*		P21	
C10	JM23600043	PIED A		1	*		P20	
C20	JM23600044	PLAQUE		1	*		P1	
C30	JM23600045	RIVET		1	*		P1	
C40	JM23680003	MAKITA LOGO LABEL		1	*			
090-1	JM00000235	LEG A COMPLETE	X	1				
091	JM23610005	JAMBE COMPLETE C		1			P62	
C10	JM23600050	BOULON DE REGLAGE		1	*		P67	
C20	JM23600051	PIED C		1	*		P20	
C30	JM23600044	PLAQUE		1	*		P1	
C40	JM23600045	RIVET		1	*		P1	
092	JM23610004	JAMBE COMPLETE B		1	*		P21	
C10	JM23600046	PIED B		1	*		P20	
C20	JM23600044	PLAQUE		1	*		P1	
C30	JM23600045	RIVET		1	*		P1	
092-1	JM00000235	LEG A COMPLETE	X	1				
093	JM23610003	JAMBE COMPLETE A		1	*		P21	
C10	JM23600043	PIED A		1	*		P20	
C20	JM23600044	PLAQUE		1	*		P1	
C30	JM23600045	RIVET		1	*		P1	
C40	JM23680003	MAKITA LOGO LABEL		1	*			
093-1	JM00000235	LEG A COMPLETE	X	1				
094	JM23600049	ECROU D AJUSTEMENT		1			P3	
095	JM23600048	BOUCHON DE JAMBE B		1	*		P3	
095-1	JM00000238	LEG FEET,A	O	1				
096	JM23600047	BOUCHON DE JAMBE A		3	*		P3	
096-1	JM00000234	LEG FEET,B	O	3				
097	JM23610050	SET DE FIXATION		1	*		A38	
D10		INC. 15-22,27-29,31-43			*			
098	JM00000256	ROLLER SET		1				
D10		INC. 56-62, 99						
099	JM23600004	COUVERCLE		1			P1	
100	JM00000219	BRACKET SET		1				
D10		INC. 101-104, 106-130						
101	JM23600059	VIS M8x65		2			P1	
102	JM21000059	RONDELLE 8		2		0	P1	
103	JM21000060	RONDELLE 8		2		0	P1	

Model No.WST06 MITER SAW STAND

Position	Référence pièce	Description	Echange	QTE	New/Old	ption 1	Option 2	COMMENTAIRE
104	JM00000241	SPACER PLATE COMPLETE		2				
D10		INC. 105						
105	JM00000192	INDICATION LABEL		2				
106	JM23600029	RAIL MOBILE		2			P64	
107	JM23600028	ECROU M8		4			P1	
108	JM00000165	HEX BOLT M8X30		4				
109	JM00000166	FOOT		4				
110	JM21000058	ECROU M8		4	0		P1	
111	JM23600027	VIS M8x16		4			P1	
112	JM00000226	BRACKET L COMPLETE		1				
C10	JM00000194	L LABEL		1				
113	JM21000060	RONDELLE 8		4	0		P1	
114	JM21000106	ECROU FREIN M8		4	0		P1	
115	JM00000227	SPRING BUSH		2				
116	JM00000176	SPRING A		2				
117	JM00000174	PIN 4X18		2				
118	JM00000173	SPRING B		2				
119	JM00000172	SAFETY LEVER		2				
120	JM00000167	CROSS HEAD SCREW M6X50		2				
121	JM27000024	RONDELLE PLATE 6		2	0		P1	
122	JM00000175	LOCK LEVER		2				
123	JM27000024	RONDELLE PLATE 6		2	0		P1	
124	JM00000169	LOCK NUT M6		2				
125	JM00000167	CROSS HEAD SCREW M6X50		2				
126	JM27000024	RONDELLE PLATE 6		2	0		P1	
127	JM00000168	LOCK HOLDER		2				
128	JM27000024	RONDELLE PLATE 6		2	0		P1	
129	JM00000169	LOCK NUT M6		2				
130	JM00000228	BRACKET R COMPLETE		1				
C10	JM00000195	R LABEL		1				
A01	JM23600058	WRENCH 13		1				
A02	JM23400087	HEX. WRENCH 5		1				