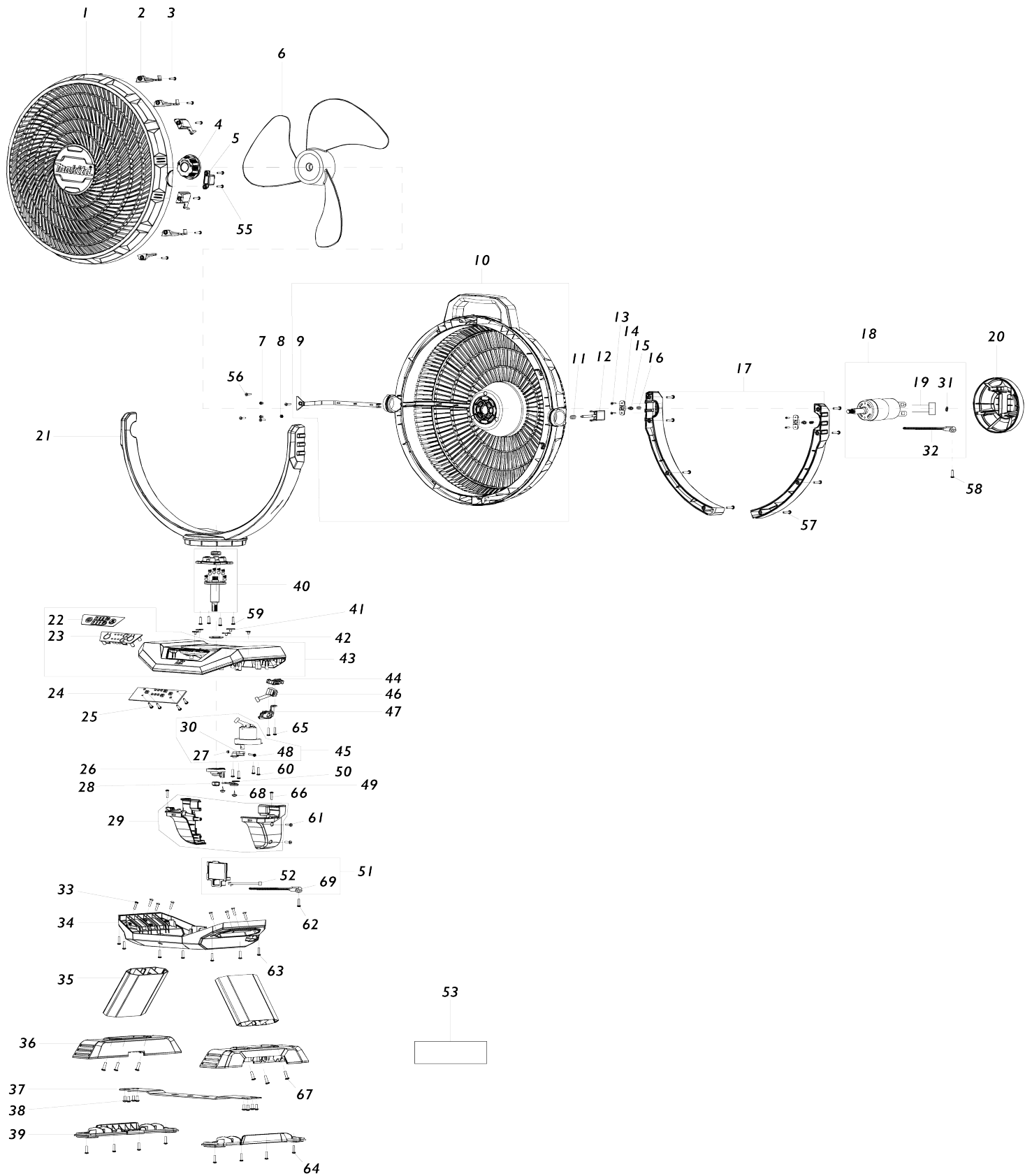


Model No.DCF301 Ventilateur Sans Fil



Model No.DCF301 Ventilateur Sans Fil

| Numéro d'article | N ° de pièces | Description | Interchangeabilité | Q'ty | Nouvelle / ancienne | Note 1 | Note 2 |
|------------------|---------------|--------------------------------|--------------------|------|---------------------|--------|--------|
| 001 | TE00000522 | FRONT COVER | | 1 | * | | |
| 001-1 | TE00000848 | FRONT COVER | | 1 | | | |
| 002 | TE00000376 | SHELL HOOK(BLUE) | | 6 | | | |
| 003 | TE00000028 | TAPPING SCREW 3X14 | | 6 | | | |
| 004 | TE00000523 | BLADE LOCK | | 1 | | | |
| 005 | TE00000372 | RELEASE BUTTON | | 1 | | | |
| 006 | TE00000524 | FAN BLADE | | 1 | * | | |
| 006-1 | TE00000702 | FAN BLADE | O | 1 | | | |
| 007 | TE00000525 | P.H. SCREW M3X4 | | 2 | | | |
| 008 | TE00000558 | CIRCLIP | | 1 | | | |
| 009 | TE00000530 | WIRE COVER | | 1 | | | |
| 010 | TE00000559 | BACK COVER | | 1 | * | | |
| 010 | | INC. 9 | | | * | | |
| 010-1 | TE00000846 | BACK COVER | < | 1 | | | |
| 010-1 | | INC. 9 | | | | | |
| 011 | TE00000378 | SPRING | | 1 | | | |
| 012 | TE00000364 | LOCKED SCREW FOR FRONT HOUSING | | 1 | | | |
| 013 | TE00000203 | SELF-TAPPING SCREW 2.5X8 | | 4 | | | |
| 014 | TE00000189 | STOPPER SUPPORT | | 2 | | | |
| 015 | TE00000190 | STOPPER | | 2 | | | |
| 016 | TE00000197 | SPRING1 | | 2 | | | |
| 017 | TE00000527 | BACK COVER OF THE SUPPORT L R | | 1 | | | |
| 018 | TE00000528 | MOTOR ASSY | | 1 | * | | |
| 018 | | INC. 19,31,32 | | | * | | |
| 018-1 | TE00000854 | MOTOR ASSY | S | 1 | | | |
| 018-1 | | INC. 19,31,32 | | | | | |
| 019 | TE00000529 | MOTOR CONNECTION WIRE | | 1 | * | | |
| 019-1 | TE00000856 | MOTOR CONNECTION WIRE | S | 1 | | | |
| 020 | TE00000531 | MOTOR REAR COVER | | 1 | | | |
| 021 | TE00000532 | STAND | | 1 | | | |
| 022 | TE00000560 | SWITCH LABEL | | 1 | | | |
| 023 | TE00000534 | SWITCH PANEL | | 1 | | | |
| 024 | TE00000535 | PCB | | 1 | | | |
| 025 | TE00000388 | TAPPING SCREW 3X10 | | 4 | | | |
| 026 | TE00000274 | SHAKE HEAD-POM 1 | | 1 | * | | |
| 026-1 | TE00000858 | SHAKE HEAD-POM 1 | S | 1 | | | |
| 027 | TE00000281 | NUT M3 | | 1 | | | |
| 028 | TE00000450 | NUT M8 | | 1 | * | | |
| 028-1 | TE00000859 | SCREW M3X10 WITH SPRING WASHER | S | 4 | | | |
| 029 | TE00000536 | BATTERY HOUSING | | 1 | | | |
| 030 | TE00000282 | SHAKE HEAD-POM 2 | | 1 | | | |
| 031 | TE00000537 | WIRE SHEATH RUBBER | | 1 | | | |
| 032 | TE00000407 | CABLE TIE | | 1 | | | |
| 033 | TE00000538 | SCREW M4X8 | | 8 | | | |
| 034 | TE00000539 | LOWER COVER | | 1 | | | |

| | | | | | | |
|-------|------------|-----------------------------------|---|---|---|--|
| 035 | TE00000540 | SUPPORT FOOT | | 2 | | |
| 036 | TE00000541 | FOOT | | 2 | | |
| 037 | TE00000542 | FASTEN IRON PART OF TRIPOD | | 1 | | |
| 038 | TE00000543 | CROSS BELT PAD SCREW M3X10 | | 8 | | |
| 039 | TE00000544 | FOOT RUBBER HOUSING | | 2 | | |
| 040 | TE00000545 | PRINCIPAL AXIS | | 1 | * | |
| 040-1 | TE00000860 | PRINCIPAL AXIS | S | 1 | | |
| 041 | TE00000474 | POM PLATE | | 5 | | |
| 042 | TE00000546 | FLAT WASHER | | 1 | * | |
| 042-1 | TE00000861 | FLAT WASHE | S | 1 | | |
| 043 | TE00000547 | UPPER COVER | | 1 | * | |
| 043 | | INC. 22,23 | | | * | |
| 043-1 | TE00000632 | UPPER COVER | X | 1 | * | |
| 043-1 | | INC. 22,23 | | | * | |
| 043-2 | TE00000862 | UPPER COVER BLUE ASSY | S | 1 | * | |
| 043-2 | | INC. 22,23 | | | * | |
| 043-3 | TE00000863 | UPPER COVER BLUE ASSY CN | X | 1 | | |
| 043-3 | | INC. 22,23 | | | | |
| 044 | TE00000548 | CHARGING SOCKET PLUG | | 1 | | |
| 045 | TE00000561 | SUB MOTOR | | 1 | | |
| 045 | | INC. 27,30,48 | | | | |
| 046 | TE00000549 | DC CHARGE BASE | | 1 | | |
| 047 | TE00000550 | ADAPTOR PLATE | | 1 | | |
| 048 | TE00000102 | PHILLIPS HEAD SCREW M3X14 | | 1 | | |
| 049 | TE00000551 | SHAKE HEAD-CONNECTION IRO N | | 1 | | |
| 050 | TE00000552 | WASHER | | 1 | | |
| 051 | TE00000554 | TERMINAL ASSY | | 1 | | |
| 051 | | INC. 52,69 | | | | |
| 052 | TE00000555 | BATTERY SOCKET CONNECTION WIRE | | 1 | | |
| 053 | TE00000568 | RATING LABEL | | 1 | | |
| 055 | TE00000028 | TAPPING SCREW 3X14 | | 2 | | |
| 056 | TE00000028 | TAPPING SCREW 3X14 | | 4 | | |
| 057 | TE00000028 | TAPPING SCREW 3X14 | | 8 | | |
| 058 | TE00000028 | TAPPING SCREW 3X14 | | 1 | | |
| 059 | TE00000028 | TAPPING SCREW 3X14 | | 4 | | |
| 060 | TE00000028 | TAPPING SCREW 3X14 | | 4 | | |
| 061 | TE00000028 | TAPPING SCREW 3X14 | | 2 | | |
| 062 | TE00000028 | TAPPING SCREW 3X14 | | 1 | | |
| 063 | TE00000028 | TAPPING SCREW 3X14 | | 7 | | |
| 064 | TE00000028 | TAPPING SCREW 3X14 | | 8 | | |
| 065 | TE00000388 | TAPPING SCREW 3X10 | | 2 | | |
| 066 | TE00000388 | TAPPING SCREW 3X10 | | 2 | | |
| 067 | TE00000538 | SCREW M4X8 | | 6 | | |
| 068 | TE00000543 | CROSS BELT PAD SCREW M3X10 | | 2 | | |
| 069 | TE00000407 | CABLE TIE | | 1 | | |
| A01 | TE00000442 | AC ADAPTER | | 1 | | |

Veuillez indiquer les pièces n ° lorsque votre commande.

Date d'impression 01/26/2026