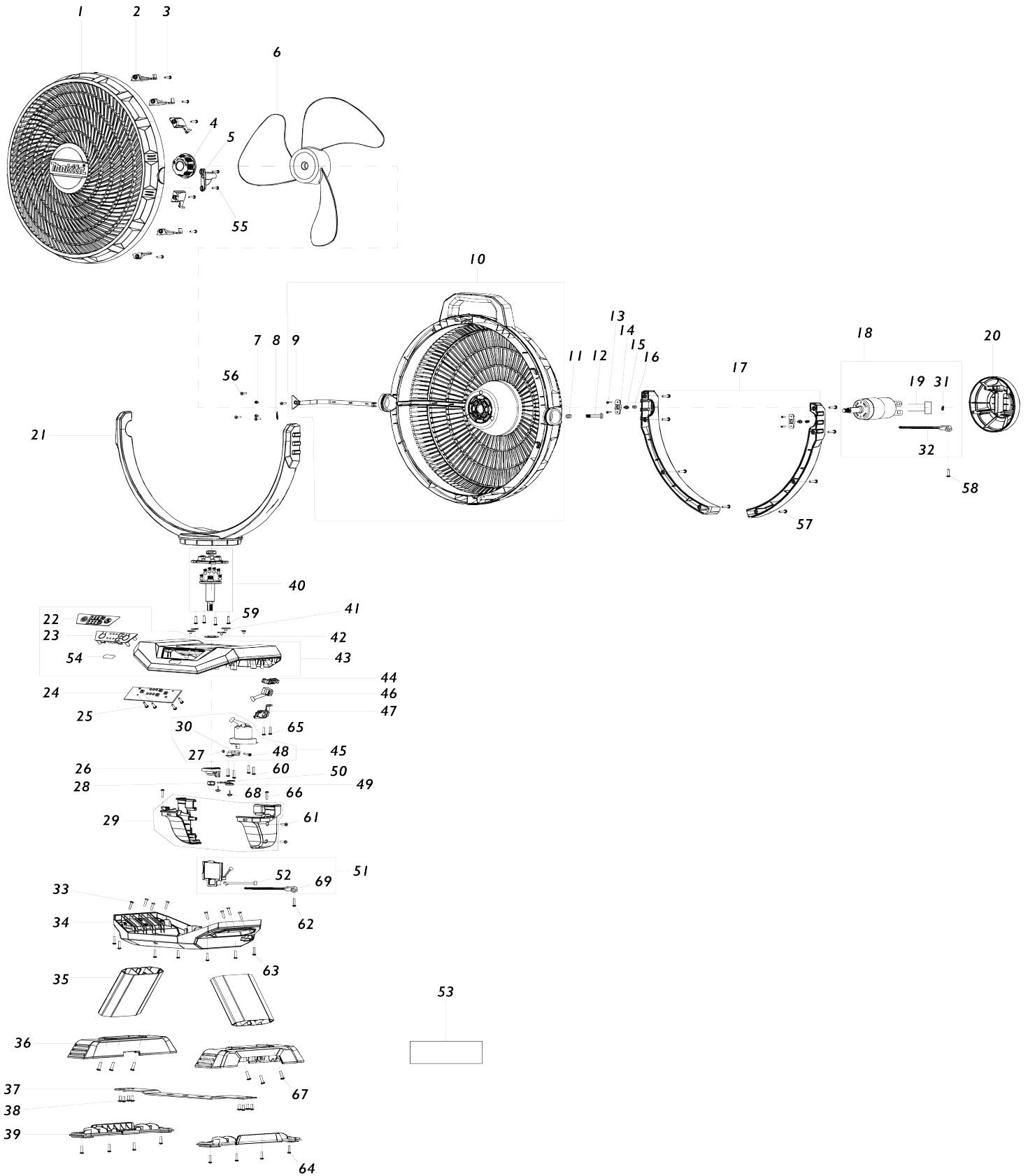


Model No.CF002G CORDLESS FAN



Model No.CF002G CORDLESS FAN

Numéro d'article	N ° de pièces	Description	Interchangeabilité	Q'ty	Nouvelle / ancienne	Note 1	Note 2
001	TE00000573	FRONT COVER		1	*		
001-1	TE00000844	FRONT COVER	<	1			
002	TE00000376	SHELL HOOK(BLUE)		6			
003	TE00000028	TAPPING SCREW 3X14		6			
004	TE00000523	BLADE LOCK		1			
005	TE00000362	RELEASE BUTTON		1			
006	TE00000524	FAN BLADE		1	*		
006-1	TE00000702	FAN BLADE	O	1			
007	TE00000525	P.H. SCREW M3X4		2			
008	TE00000558	CIRCLIP		1			
009	TE00000530	WIRE COVER		1			
010	TE00000559	BACK COVER		1	*		
010		INC. 9			*		
010-1	TE00000846	BACK COVER	<	1			
010-1		INC. 9					
011	TE00000378	SPRING		1			
012	TE00000364	LOCKED SCREW FOR FRONT HOUSING		1			
013	TE00000203	SELF-TAPPING SCREW 2.5X8		4			
014	TE00000189	STOPPER SUPPORT		2			
015	TE00000190	STOPPER		2			
016	TE00000197	SPRING1		2			
017	TE00000527	BACK COVER OF THE SUPPORT L R		1			
018	TE00000528	MOTOR ASSY		1			
018		INC. 19,31,32					
019	TE00000529	MOTOR CONNECTION WIRE		1			
020	TE00000531	MOTOR REAR COVER		1			
021	TE00000532	STAND		1			
022	TE00000560	SWITCH LABEL		1			
023	TE00000534	SWITCH PANEL		1			
024	TE00000574	PCB		1			
025	TE00000388	TAPPING SCREW 3X10		4			
026	TE00000274	SHAKE HEAD-POM 1		1			
027	TE00000281	NUT M3		1			
028	TE00000450	NUT M8		1			
029	TE00000575	BATTERY HOUSING		1			
030	TE00000282	SHAKE HEAD-POM 2		1			
031	TE00000537	WIRE SHEATH RUBBER		1			
032	TE00000407	CABLE TIE		1			
033	TE00000538	SCREW M4X8		8			
034	TE00000539	LOWER COVER		1			
035	TE00000576	SUPPORT FOOT		2			
036	TE00000541	FOOT		2			
037	TE00000542	FASTEN IRON PART OF TRIPOD		1			
038	TE00000543	CROSS BELT PAD SCREW M3X10		8			
039	TE00000544	FOOT RUBBER HOUSING		2			
040	TE00000545	PRINCIPAL AXIS		1			

041	TE00000474	POM PLATE		5		
042	TE00000546	FLAT WASHER		1		
043	TE00000577	UPPER COVER		1	*	
043		INC. 22,23,54			*	
043-1	TE00000634	UPPER COVER	X	1		
043-1		INC. 22,23,54				
044	TE00000548	CHARGING SOCKET PLUG		1		
045	TE00000561	SUB MOTOR		1		
045		INC. 27,30,48				
046	TE00000549	DC CHARGE BASE		1		
047	TE00000550	ADAPTOR PLATE		1		
048	TE00000102	PHILLIPS HEAD SCREW M3X14		1		
049	TE00000551	SHAKE HEAD-CONNECTION IRO N		1		
050	TE00000552	WASHER		1		
051	TE00000553	TERMINAL ASSY		1		
051		INC. 52,69				
052	TE00000555	BATTERY SOCKET CONNECTION WIRE		1		
053	TE00000586	RATING LABEL		1		
054	TE00000580	XGT LABEL		1		
055	TE00000028	TAPPING SCREW 3X14		2		
056	TE00000028	TAPPING SCREW 3X14		4		
057	TE00000028	TAPPING SCREW 3X14		8		
058	TE00000028	TAPPING SCREW 3X14		1		
059	TE00000028	TAPPING SCREW 3X14		4		
060	TE00000028	TAPPING SCREW 3X14		4		
061	TE00000028	TAPPING SCREW 3X14		2		
062	TE00000028	TAPPING SCREW 3X14		1		
063	TE00000028	TAPPING SCREW 3X14		7		
064	TE00000028	TAPPING SCREW 3X14		8		
065	TE00000388	TAPPING SCREW 3X10		2		
066	TE00000388	TAPPING SCREW 3X10		2		
067	TE00000538	SCREW M4X8		6		
068	TE00000543	CROSS BELT PAD SCREW M3X10		2		
069	TE00000407	CABLE TIE		1		
A01	TE00000442	AC ADAPTER		1		

Veuillez indiquer les pièces n ° lorsque votre commande.

Date d'impression 04/01/2025