

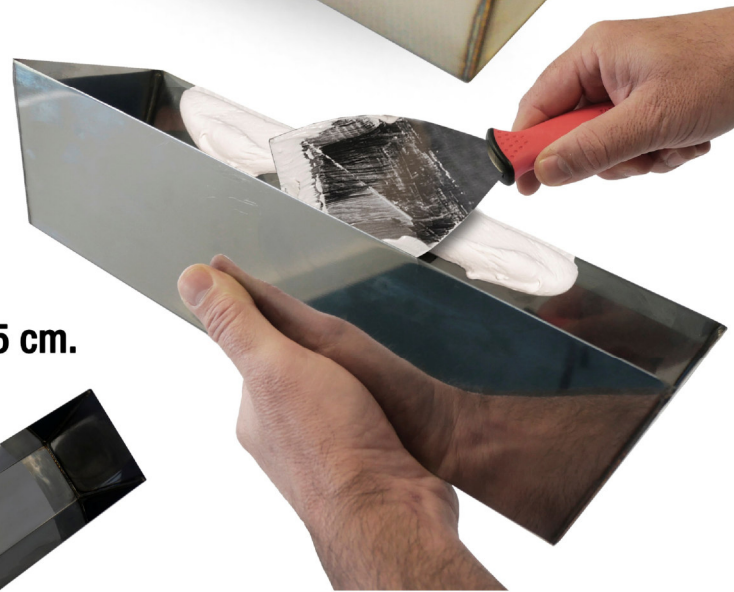
35cm stainless steel plastering trough

Réf . 44 12 34



**High-quality manufacturing in stainless steel.
Welds made with precision for perfect sealing
and high durability.**

**Ideal for finishing work (smoothing, jointing)
or repairs on drywall. Provides excellent working
comfort (optimal grip).
Sharpened upper edges for perfect cleaning of your
plasterer's knives, accommodating widths of up to 35 cm.**



Weight : 545g
High dimensions : 350x106mm
Low dimensions : 320x73mm
Height : 87mm



Check out our
full range of drywall tools
on our website :
www.taliaplast.com



TALIA
PLAST

SOFOP taliaplast®
3 route de la Torse - RN 171 - BP 46
FR - 44450 Montoir de Bretagne - France
Commercial France
Tél. standard : 02 51 16 60 60
e-mail : commercialfrance@taliaplast.com

TALIAplast® est la marque déposée de la société SOFOP S.A.S
Société française d'Outils Professionnels - SAS au capital de 10 000 000 Euros - 006 780 514 R.C.S. St Nazaire
SIREN 006 780 514 - APE 2229B, N° TVA FR 72 006 780 514, identifiant EORI:FR 006 780 514 00037

Service Commercial Export
Export Sales Department
Tél : 33 (0)2 51 16 60 86
Fax : 33 (0)2 40 45 44 64
e-mail: export@taliaplast.com
zone Europe: saleseurope@taliaplast.com