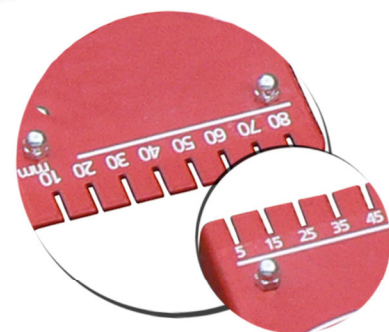
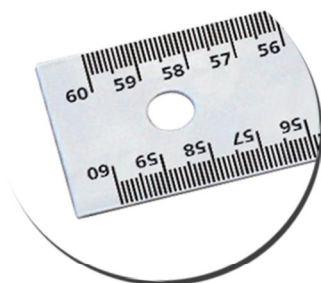
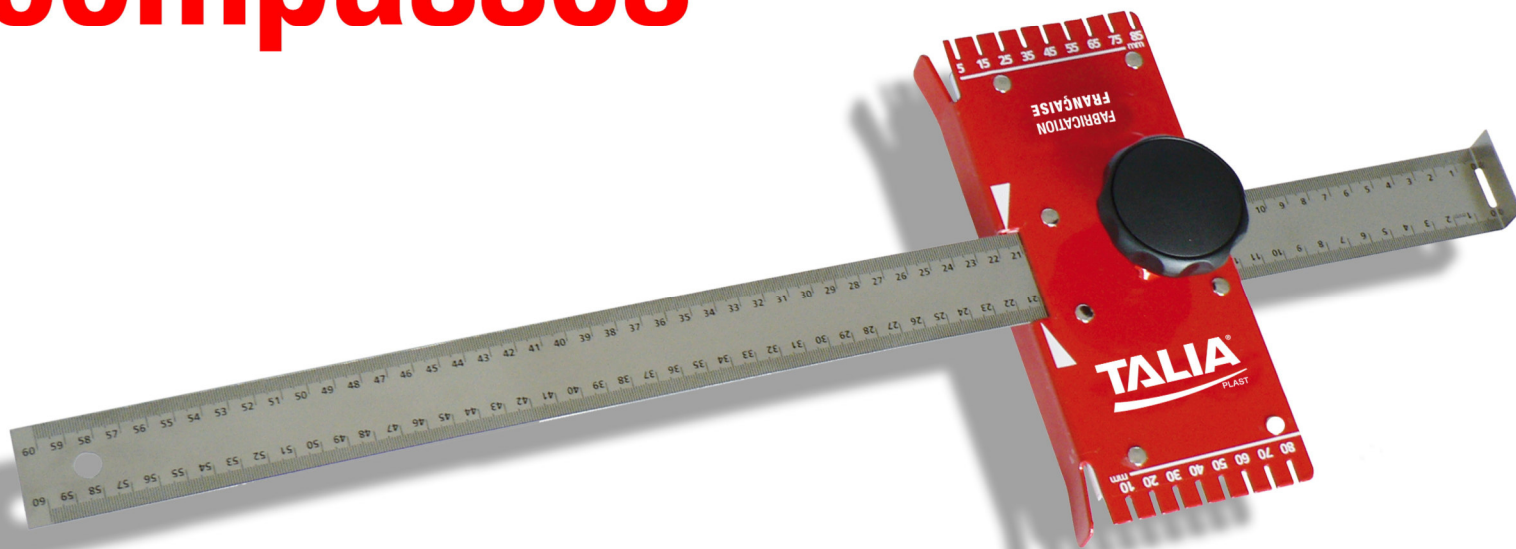


Plasterer's surface compasses

Réf. 44 12 30



For quick and precise cutting or marking of gypsum plates.

- Graduated stainless steel blade.
- Tool adaptable for both left-handed and right-handed users.
- Compatible with all types of utility knives.
- Large tightening knob for easy handling.
- The heel profile facilitates smooth sliding along the edge of the plate.
- Packaging: 1 piece.

Vidéo :



Cutting from 5 to 85 mm



Individual packaging

Cutting from 85 to 600 mm



Marking



TALIA[®]
PLAST