


Service Kit

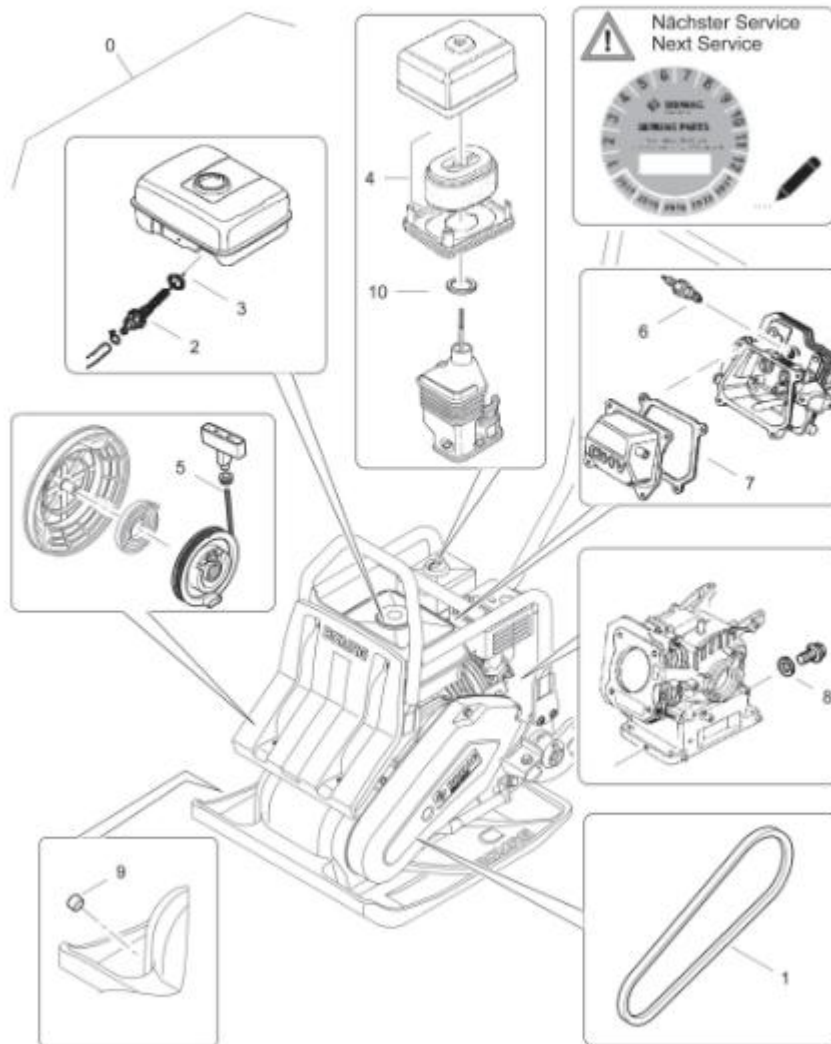
Vorwärtslaufende Vibrationsplatten/
Vibrating plates non reversible

BP 20/50


BP 25/50

775 230 03

194.08	S/N 101000000001 ▶
	SW10-Service kit SW10-Service Kit SW10-Kit de service
Page Seite 1 / 1	
 BOMAG PART GROUP	77523003_001_00



77523003_001_00

S/N 101000000001 ▶		194.08
SW10-Service kit SW10-Service Kit SW10-Kit de service		
		Page Seite 1 / 1
		 BOMAG HARD GROUP

77523003 1001 1

Pos.	Part no.	Qty.	Description	Benennung	Designation
Pos.	Teilennr.	Menge			
Pos.	No.piece	Qte.			
0	77523003	1	SW10-Service kit	SW10-Service Kit	SW10-Kit de service
1	06312023	1	V-belt	Keilriemen	Courroie trapezoidale
2	05747161	1	Filter,fuel	Filter,Kraftstoff	Filtre,carburant
3	05747188	1	Loop ring	Runddichtring	Joint torique
4	05747215	1	Element,washable	Element,auswaschbar	Élément,lavable
5	05747296	1	Starter rope	Starterseil	Cordon de lancateur
6	05747282	1	Spark plug	Zündkerze	Bougie
7	05747125	1	Valve cover gasket	Ventildeckeldichtung	Joint de couv.de clapet
8	05747129	1	Gasket	Dichtung	Joint
9	07611616	1	Magnetic plug	Magnetverschlusschraube	Vis de fermeture magnét.
10	05747126	1	Gasket,knuckle tube	Knierohrdichtung	Joint de tube coudé

Betriebsstofftabelle / Table of fuels and lubricants /

Tableau des lubrifiants et carburants

Baugruppe Assembly Ensemble	Betriebsstoff Fuel or lubricant Lubrifiant/Carburant		Füllmenge ca. Quantity approx. Quantité env.
	Sommer Summer Été	Winter Winter Hiver	ACHTUNG Füllmarke beachten! Attention Observe the level marks! Attention Observer les repères des jauges!
Motor Engine Moteur	Motoröl API SF/SG Engine oil API SF/SG Huile moteur API SF/SG		0,6 l (0.16 gal US)
	SAE 10W/30 (-20 °C -- +30 °C) (-4 °F -- +86 °F)		
	SAE 10W/40 (-20 °C -- +40 °C) (-4 °F -- +104 °F)		
	SAE 15W/40 (-15 °C -- +40 °C) (-5 °F -- +104 °F)		
	SAE 30 (+10 °C -- +30 °C) (+50 °F -- +86 °F)	SAE 10W (-20 °C -- 0 °C) (-4 °F -- +32 °F)	
	SAE 40 (+25 °C -- +45 °C) (+77 °F -- +113 °F)	SAE 20W/20 (-10 °C -- +10 °C) (+14 °F -- +50 °F)	
Erregerwellengehäuse Exciter shaft housing Excitatrice logement de l'arbre	wie Motoröl as engine oil Identique à l'huile moteur		0,3 l (0.08 gal US)